



mTechnician

Coherent mobile workforce-management app

With numerous successful implementations, and thousands of users, mTechnician is one of the key parts of our portfolio.

In the late 2014, we started working on changing the way enterprise logistic apps were being widely presented- as pragmatic table-based screens with plain text fields. In order to make enterprise apps more human-friendly, we've re-designed the user interfaces, consulting with experienced UX developers, we came up with an entirely new layout of our application portfolio. mTechnician then became not only a strong workflow optimization tool, but also a product, that is convenient and easy to-work with.

Intuitive touch controls along with interactive features merge into a powerful management tool with built-in team scenarios, process overviews, 'role'-based workflows, and that also draws the most out of nowadays common mobile-devices features. Thanks to obeying the SAP standards all through the development, the app can be easily integrated with any SAP module, or with any other application on the Mobile Device.

Key features of mTechnician

- ✓ intuitive assignment creation
- ✓ team scenarios
- ✓ integrated GPS (Google Maps)
- ✓ Integrated GISlet by Astec
- ✓ photo-documentation
- ✓ sophisticated synchronisation policy
- ✓ transparent data-transfers including full-range monitoring

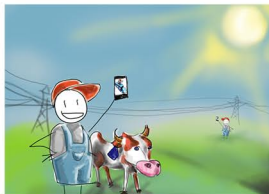
Key features of a mobile solution

- ✓ lowers the expenses
- ✓ saves time
- ✓ increases personal effectivity
- ✓ convenient for the customers
- ✓ flexible workflow
- ✓ opens possibilities for new ways of business
- ✓ increases operational effectivity

team scenarios

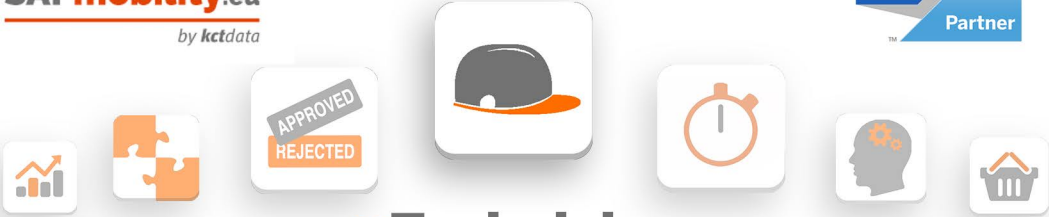


off-line availability



structured reviews





mTechnician

Key Factors of solutions by KCTdata

- ✓ Support for both on-line and off-line work - energy savings, service not required.
- ✓ Usage of SAP Mobile Platform 3.0 is a guarantee of painless transfer to any mobile OS.
- ✓ Widen your services and product portfolio with finished and configurable Mobile Apps.
- ✓ We pay close attention to the SAP standards. Therefore, our apps are easily managed or even further developed by your SAP admins.
- ✓ “PBK” certified. Under predetermined conditions, you get a guarantee of compatibility with new versions of SMP, or even with new versions of your mobile OS. Also, for mere 20% of your investment, we guarantee a transfer to a different OS (Android, Windows Phone, iOS,..).
- ✓ Our apps are trusted by companies like RWE, Foxconn, DHL, MVV ENERGIE, etc.
- ✓ We have a strong experienced team of SMP and HCPms developers.
- ✓ We run 24/7 Basis and Service Desk Support for SAP Mobile Platform.
- ✓ We have years worth of experience in mobile development.
- ✓ Our apps are User friendly and easy-to-use, our UX experts are constatnly working on the software interface updates to achieve the most convenient and effective usage possible.

	Today		Tomorrow	Next Days	Date		
Info	Start	End	DWU	Placed	Project	Openze	Status
	18.08.09.12	18.08.14.48	KTM	Subeignee NTL	820000550206	0010	
	19.08.07.00	19.08.11.24	KTM	Subeignee NTL	820000550206	0010	
	20.08.08.06	20.08.14.48	KTM	Subeignee NTL	820000550207	0010	☑
	22.08.07.00	22.08.09.30	KTM	Subeignee NTL	820000550208	0010	☑
	22.08.09.36	22.08.12.06	KTM	Tidebenice STL	820000550242	0010	☑
	22.08.12.06	22.08.14.36	KTM	Tidebenice STL	820000550242	0010	☑
	25.08.07.00	25.08.09.30	KTM	Subeignee NTL	820000550246	0010	
	25.08.10.00	25.08.12.30	KTM	Tidebenice STL	820000550248	0010	☑
	26.08.12.00	26.08.14.30	KTM	Subeignee NTL	820000550250	0010	

